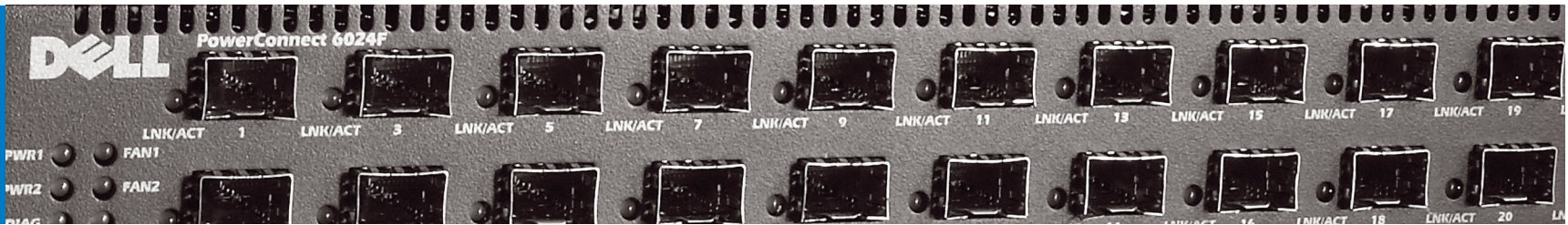


**Dell PowerConnect
Managed Switches**



Dell™ PowerConnect™ Managed Switches

PRODUCTS	POWERCONNECT 3424 and 3424P	POWERCONNECT 3448 and 3448P	POWERCONNECT 5324	POWERCONNECT 6024	POWERCONNECT 6024F
FEATURES	<ul style="list-style-type: none"> Fast Ethernet switch with resilient stacking, advanced management and security capabilities High performance access layer switch for desktop connectivity 3424P delivers Power-over-Ethernet (PoE) 	<ul style="list-style-type: none"> Fast Ethernet switch with resilient stacking, advanced management and security capabilities High performance access layer switch for desktop connectivity 3448P delivers Power-over-Ethernet (PoE) 	<ul style="list-style-type: none"> Gigabit Ethernet switch with advanced security capabilities and enterprise-class management features High performance switch for desktop and server connectivity 	<ul style="list-style-type: none"> Gigabit Ethernet switch delivering Layer 3 routing capabilities High availability routing switch for Layer 3 edge connectivity or traffic aggregation Flexible cabling solution with both copper and fiber capabilities 	<ul style="list-style-type: none"> Gigabit Ethernet switch delivering Layer 3 routing capabilities High availability routing switch for Layer 3 edge connectivity or traffic aggregation Flexible cabling solution with both copper and fiber capabilities
Switching capacity	12.8 Gbps	17.6 Gbps	48 Gbps	48 Gbps	48 Gbps
10/100BaseT ports	24 RJ-45 ports	48 RJ-45 ports	None	None	None
10/100/1000BaseT ports	2 RJ-45 ports (can be used to enable resilient stacking)	2 RJ-45 ports (can be used to enable resilient stacking)	24 RJ-45 ports	24 RJ-45 ports	8 RJ-45 ports (combo with SFP slots)
Fiber media support	2 SFP fiber slots	2 SFP fiber slots	4 SFP fiber slots (combo with 1000BaseT)	8 SFP fiber slots (combo with 1000BaseT)	24 SFP fiber slots
VLANs	IEEE 802.1Q tagging and port-based; up to 256 VLANs; private VLANs	IEEE 802.1Q tagging and port-based; up to 256 VLANs; private VLANs	IEEE 802.1Q tagging and port-based, up to 247 VLANs, protocol-based VLANs; dynamic VLAN (GVRP)	IEEE 802.1Q tagging and port-based, up to 4063 VLANs; private VLANs	IEEE 802.1Q tagging and port-based, up to 4063 VLANs; private VLANs
Class of service	IEEE 802.1p tagging and port-based with four queues per port; L2 and L3 and prioritization; WRR and strict queue scheduling	IEEE 802.1p tagging and port-based with four queues per port; L2 and L3 prioritization; WRR and strict queue scheduling	IEEE 802.1p tagging and port-based with four queues per port; L2 and L3 prioritization; WRR and strict queue scheduling	IEEE 802.1p tagging and port-based with; eight queues per port; L2, L3 and L4 prioritization; advanced flow-based policies; WRR and strict queue scheduling	IEEE 802.1p tagging and port-based with; eight queues per port; L2, L3 and L4 prioritization; advanced flow-based policies; WRR and strict queue scheduling
Availability	Classic Spanning Tree w/FastLink option; Rapid Spanning Tree (IEEE 802.1w); broadcast storm control; Multiple Spanning Trees (IEEE 802.1s); optional external redundant power (RPS-600 for 3424); optional extended power (EPS-470 for 3424P)	Classic Spanning Tree w/FastLink option; Rapid Spanning Tree (IEEE 802.1w); broadcast storm control; Multiple Spanning Trees (IEEE 802.1s); optional external redundant power (RPS-600 for 3448); optional extended power (EPS-470 for 3448P)	Classic Spanning Tree w/FastLink option; Rapid Spanning Tree (IEEE 802.1w); broadcast storm control; optional external redundant power with PowerConnect RPS-600 (sold separately)	Classic Spanning Tree w/FastLink option; Rapid Spanning Tree (IEEE 802.1w); Multiple Spanning Trees (IEEE 802.1s); broadcast storm control; dual hot-swap power supplies and fans	Classic Spanning Tree w/FastLink option; Rapid Spanning Tree (IEEE 802.1w); Multiple Spanning Trees (IEEE 802.1s); broadcast storm control; dual hot-swap power supplies and fans
Management	CLI (Telnet/console), embedded web server, SNMP v1/v2c/v3, four RMON groups, multiple MIBs; Syslog remote logging; dual configuration files; dual firmware images; Dell OpenManage™ Network Manager and IT Assistant integration	CLI (Telnet/console), embedded web server, SNMP v1/v2c/v3, four RMON groups, multiple MIBs; Syslog remote logging; dual configuration files; dual firmware images; Dell OpenManage Network Manager and IT Assistant integration	CLI (Telnet/console), embedded web server, SNMP v1/v2c; four RMON groups; multiple MIBs; Syslog remote logging; dual configuration files; dual firmware images; Dell OpenManage Network Manager and IT Assistant integration	CLI (Telnet/console) including two out-of-band management interfaces (RS-232 and RJ-45); embedded web server; SNMP v1/v2c/v3, four RMON groups; multiple MIBs; Syslog remote logging; dual configuration files; dual firmware images; Dell OpenManage Network Manager and IT Assistant integration	CLI (Telnet/console) including two out-of-band management interfaces (RS-232 and RJ-45); embedded web server; SNMP v1/v2c/v3, four RMON groups; multiple MIBs; Syslog remote logging; dual configuration files; dual firmware images; Dell OpenManage Network Manager and IT Assistant integration
Security	MAC-based port security; IP address management filtering; RADIUS and TACACS+ remote authentication; SSL and SSH management encryption; MAC-based Access Control Lists (ACLs)	MAC-based port security; IP address management filtering; RADIUS and TACACS+ remote authentication; SSL and SSH management encryption; MAC-based Access Control Lists (ACLs)	MAC-based port security; IP address management filtering; RADIUS and TACACS+ remote authentication; SSL and SSH management encryption	MAC-based port security; IP address management filtering; RADIUS and TACACS+ remote authentication; SSL and SSH management encryption; Access Control Lists (ACLs)	MAC-based port security; IP address management filtering; RADIUS and TACACS+ remote authentication; SSL and SSH management encryption; Access Control Lists (ACLs)
Other features	Port mirroring; Link Aggregation (IEEE 802.3ad), LACP; IGMP Snooping v1/v2; Virtual Cable Tester™ and fiber transceiver analysis	Port mirroring; Link Aggregation (IEEE 802.3ad), LACP; IGMP Snooping v1/v2; Virtual Cable Tester and fiber transceiver analysis	Port mirroring; Link Aggregation (IEEE 802.3ad), LACP; IGMP Snooping v1/v2; copper cable diagnostics and fiber transceiver analysis; Virtual Cable Tester and fiber transceiver analysis	RIP, OSPF and VRRP for routing; IGMP and DVMRP for multicast support; port mirroring; Link Aggregation (IEEE 802.3ad); UDP Relay; LACP; IGMP Snooping v1/v2; copper cable diagnostics and fiber transceiver analysis; Virtual Cable Tester and fiber transceiver analysis	RIP, OSPF and VRRP for routing; IGMP and DVMRP for multicast support; port mirroring; Link Aggregation (IEEE 802.3ad); UDP Relay; LACP; IGMP Snooping v1/v2; copper cable diagnostics and fiber transceiver analysis; Virtual Cable Tester and fiber transceiver analysis
Chassis	1U; Desktop and Rack-mounting kit included	1U; Desktop and Rack-mounting kit included	1U; Desktop and Rack-mounting kit included	1U; Desktop and Rack-mounting kit included	1U; Desktop and Rack-mounting kit included

PowerConnect switches are offered with a three year limited warranty* including Next Business Day unit replacement†. Same Day unit replacement‡ and On-site Labor Service§ are also available.

Dell is not responsible for errors in typography, photography or omissions. *For a complete copy of our service contracts or limited warranties, please see http://www.dell.com/us/en/gen/services/service_service_contracts.htm or write Dell USA L.P., Attn: Warranties, One Dell Way, Round Rock, TX 78682. †Technician, replacement part or unit (depending on service contract) will be dispatched if necessary following phone-based troubleshooting in advance of receipt of returned defective unit. Service may be provided by third-party provider. Subject to parts availability, geographical restrictions and terms of service contract. Service timing dependent upon time of day call placed to Dell. Defective unit must be returned. Replacements may be refurbished. U.S. only, Dell, the Dell logo, and PowerConnect are trademarks of Dell Inc. Virtual Cable Tester is a trademark of Marvell. Other trademarks and trade names may be used in this document to refer to either the entities claiming the marks and names or their products. Dell disclaims proprietary interest in the marks and names of others. © Copyright 2005 Dell Inc. All rights reserved. June 2005, Kolar.



PowerConnect 6024F

GET MORE SIMPLICITY AND PERFORMANCE. GET MORE OUT OF NOW.

Visit www.dell.com for more information.

